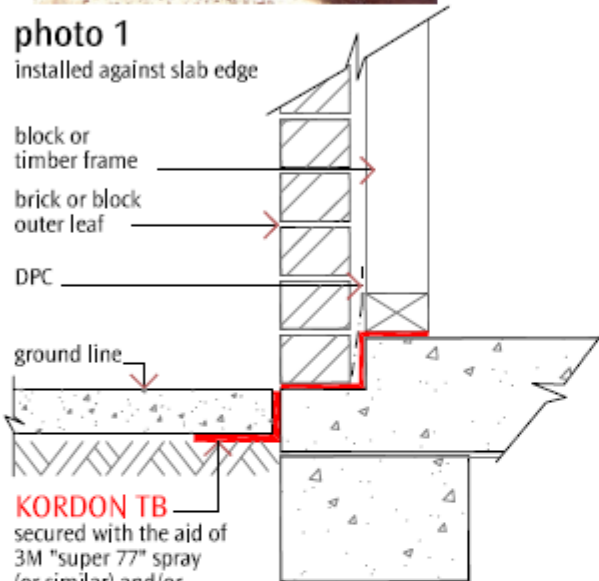




photo 1
installed against slab edge

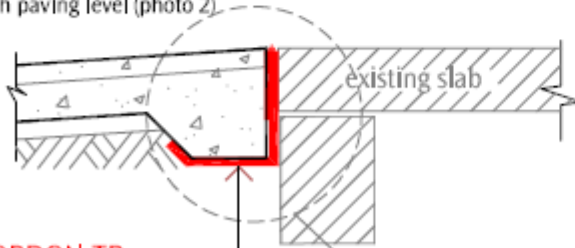
block or
timber frame
brick or block
outer leaf
DPC



KORDON TB
secured with the aid of
3M "super 77" spray
(or similar) and/or
a perforated 30mm wide
'hoop iron' or similar
metal brace stripping

section detail 1

high paving level (photo 2)



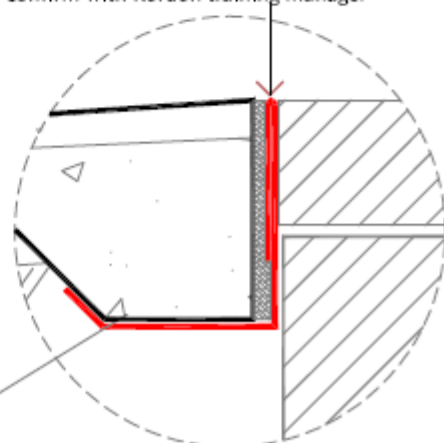
KORDON TB
secured with the aid of
3M "super 77" spray
(or similar) and/or
a perforated 30mm wide
'hoop iron' or similar
metal brace stripping



photo 2 garage entry detail

secured with the aid of 3M "super 77" spray or similar
Note:
where various slab conditions prevail i.e.
rough or damaged:-
It is important to establish a full seal to
the perimeter is achieved

KORDON TB
a minimum width of 300mm Kordon TB
is to be installed with a foldback of
100mm approx, as shown.
where dowelling occurs: installation may
vary depending on engineer's instructions
Confirm with Kordon training manager



section detail 2

driveway, disabled ramp & entry



Kordon®



Sheet No.

kd 041b

Subject:

Perimeter Paving/Slab (cold joint)

Date:
27/11/2003