

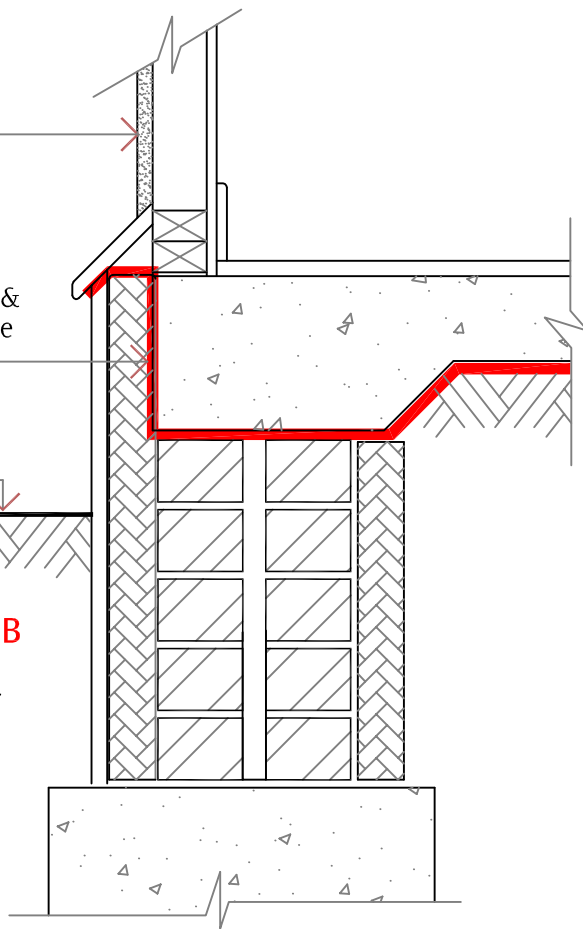
section detail 3

FC sheet /  
weatherboard  
cladding

Kordon to wrap &  
extend to outside  
as shown

ground line

**KORDON TMB**  
for termite &  
moisture barrier



section detail 4

insulating material used

concrete kerb providing  
protection at ground level  
to Kordon.  
Kordon to be "fixed" to  
external cladding with  
3M "super 77" adhesive  
or similar approved product

DPC

ground line

75mm

section detail 5

non-monolithic slab

ground line

section detail 6

insulation type cladding

 **KORDON TERMITE MOISTURE BARRIER**



Bayer Environmental Science

Subject

**full under slab**



CODEMARK™  
GM-07-CM30001

Sheet No.

**kd 000a**